

Quick Installation Guide

Motion Compact
DC WallBox
(Pole-mounted)



More product materials
please scan the QR code

Preparation Tools

Clamp current meter	Multimeter	Cross screwdriver	Straight screwdriver	Socket spanner	Stickers
Adjustable spanner	Torque spanner	Wire crimper	Diagonal pliers	Brush	
Wire stripper pliers	Claw hammer	Pneumatic drill	Knife	Heat gun	
Hydraulic press	Zip ties	Heat shrink sleeves	Insulating tape	Cotton	

Packing Lists

Note: The packaging illustration below is based on the double-connector charger. For the single-connector charger, the quantity of accessories marked with asterisks (*) is half that of the double-connector charger, while other accessories remain the same.

DC Charging Station

Charger*1	Charging Connector Holder Mounting Bracket*2	ST3.9*30 Self-tapping Screw*6	Charging Connector Holder*2	M10*80 Expansion Bolt*4	Φ6*28 Expansion Tube*6
Charger Mounting Bracket*1	M6*16 Screw*2	Wall-hanging Accessory*4	M5*12 Screw*2	Key*2	Handle*2
Fireproof Putty*2	Certification of Conformity*1				

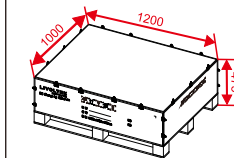
DC Charging Station Pole

Pole*1	Spring*2	Spring Fitting*2	Hose Clamp*4 (optional)	M4*20 Screw*8 (optional)	Clamp Gasket*4 (optional)	Cable Holder*2	M6*16 Screw*4	M16*100 Screw*4	M12*25 Screw*6	Drilling Template*1	Certification of Conformity*1

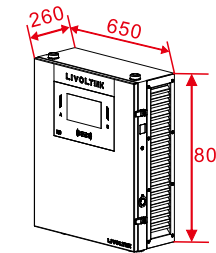
Mounting Place

Package and Device Dimensions

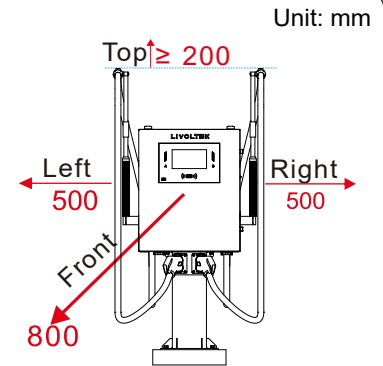
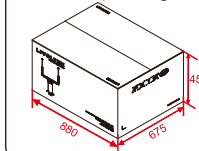
• Charging station package



• Charging station package

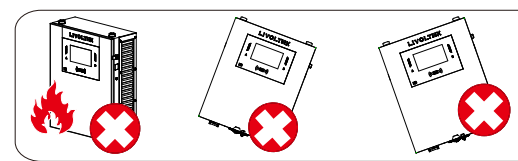


• Pole package



Installation Environment and Angle Requirement

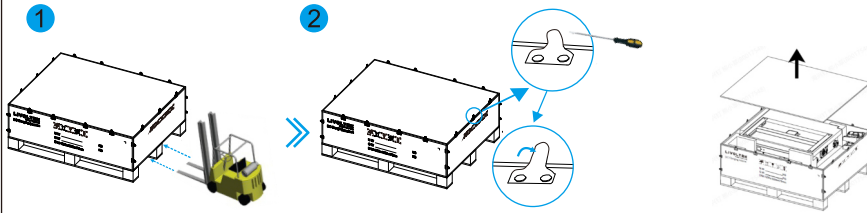
- ☀️ ≤ 55°C
- ❄️ ≥ -30°C
- 💧 ≤ 95%



*Solid floor, such as cement floor, is recommended for installation.

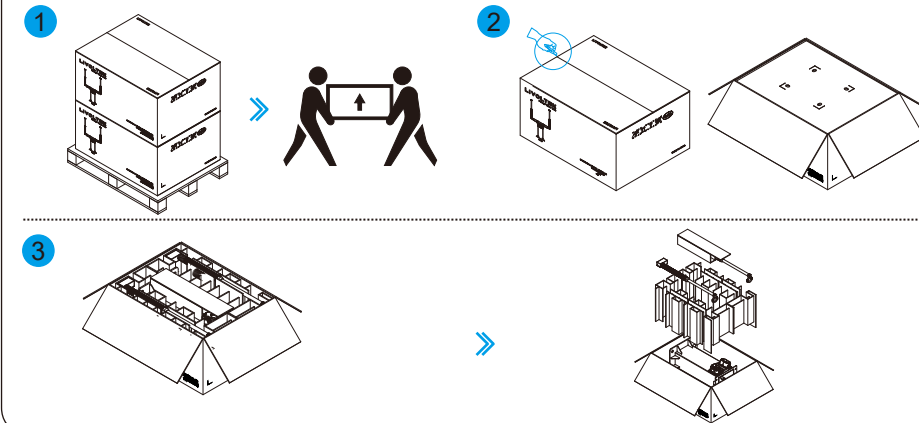
Step 1: Move the charger and pole (in original packaging) to the installation site using a forklift. Two people are recommended to carry the device and put the device on the ground.

Step 2: Open the package with a proper tool and take the device and its accessories out.



*Notice: Keep the forklift steady when lifting the device; wear protective gloves when unpacking

Below is the illustration of unpacking the pole.



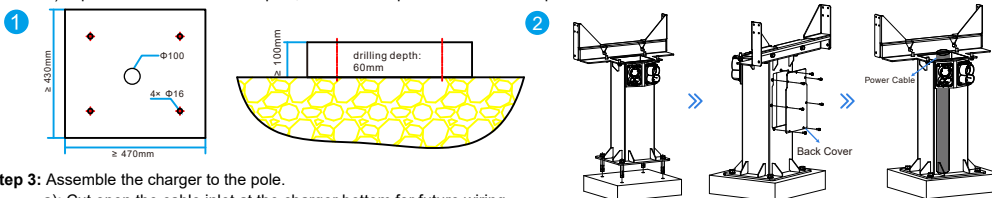
*Notice: The mounting steps for single-connector charger is same as that of the double-connector charger, except that it only includes one spring or one cable holder on device right side. The mounting steps below is based on double-connector charger.

Step 1: Prepare the installation base.

- Make a cement base with dimensions of at least 470*430*100mm (L*W*H) at the installation site.
- Put the drilling template on the base and mark the drilling positions.
- Remove the template and drill holes to a depth of 60 mm using a $\Phi 16$ drill bit.
- Make a 100 mm diameter wiring hole (same depth as the base) at the base center.

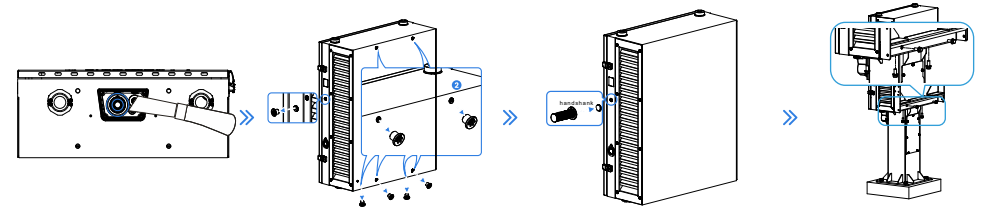
Step 2: Secure the pole to the base.

- Align the four mounting holes at the pole bottom with the four $\Phi 16$ holes on the base.
- Insert the M16*100 expansion bolts through both the pole's baseplate and the installation base.
- Secure the bolts with a torque wrench.
- Open the back cover of the pole, and lead the power cable into the pole.



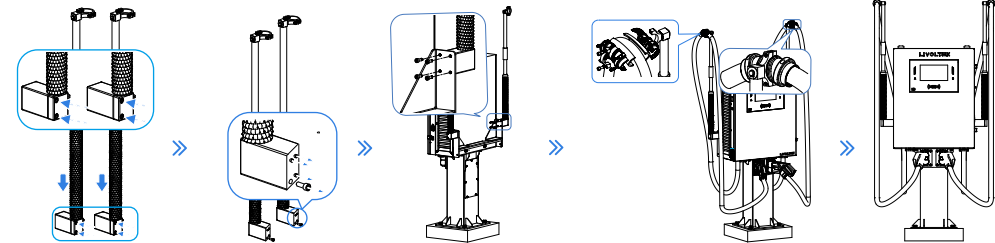
Step 3: Assemble the charger to the pole.

- Cut open the cable inlet at the charger bottom for future wiring.
- Remove the waterproof plugs from the charger: one on each side (left and right), four at the back, and two at the bottom).
- Attach the handles to both sides of the charger, then position the charger onto the pole until fully seated.
- Align the charger's mounting holes (two at the lower back and four at the bottom) with the pole corresponding holes.
- Secure the device to the pole using M12*25 screws.
- Remove the handles and insert waterproof plugs back into the vacant holes.



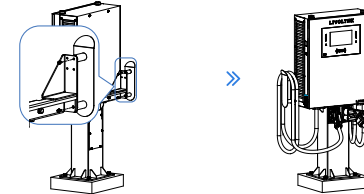
Step 4: Assemble Springs to the pole (optional, skip this step if using cable holder)

- Loosen the screws on the spring fittings, assemble the springs to the spring fittings then tighten the screws.
- Remove the M6*16 screws on the other side of the spring fittings, assemble the springs to pole with the M6*16 screws.
- Open the metal bracket on top of the springs by removing the M6*16 screws on it.
- Install the clamp gasket and hose clamp onto the charging cable with M4*20 screws, maintaining a 2.85m free cable length between the charging connector and the clamp.
- Place the cable's clamped section into the metal bracket on the spring and lock the bracket with M6*16 screws.
- Put the charging connectors into the connector holders.



Step 5: Assemble cable holder to the pole (optional, skip this step if using spring).

- Align the cable holder with the mounting holes on the pole, then secure it by installing the M6*16 screws.
- Organize the cables neatly on the cable holder and put the charging connectors into the connector holders.

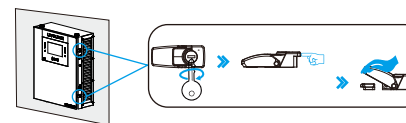


Additionally required material

Power	15&20&30kW	40&60kW
Copper five-core wire	5 AWG	2 AWG
Terminal	SC16-8	SC35-8
Torque	11N·m	

Note: Ensure the device is free from electricity before operation.

Step 1: Open the door with the key.



Step 2: Lead the power cable from inside the pole into the charger then re-install the back cover of the pole.

Step 3: Strip 180mm of the outer cable jacket to reveal the L1/L2/L3/N/PE conductors.

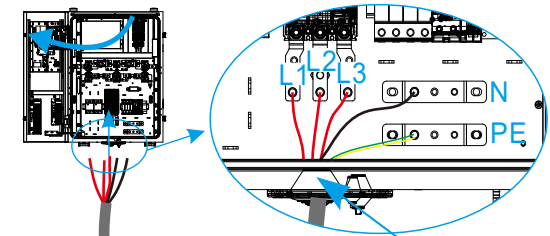
Step 4: Cut and remove 80mm from the ends of L1/L2/L3 conductors.

Step 5: Strip insulation of the L1/L2/L3/N/PE conductors properly and connect them to terminals.

Step 6: Connect the assembled L1/L2/L3/N/PE conductors to their respective ports.

Step 7: Apply fireproof putty at the internal side of the charger's cable inlet.

Step 8: Close and lock the door after wiring is completed.



Apply fireproof putty at the internal side of the device's cable inlet.